

DISTRIBUTION TRANSFORMERS

33 000/400 Volt Three Phase



Typical Data:

- Transformer For Industrial Applications:** Manufactured and Tested The Design
- SANS IEC 613781 standard** Will ensure that the unit will withstand the typically high electrical stresses
- The Large Robust Radiators** Quickly dissipate any heat created by extra losses that are normally caused by "Eddy" currents
- Short Circuit Tested to** SANS 780-IEC 60076-5 and Eskom specific 34-346
- Customise with Accessories** Please contact us for a full list of accessories

Approximate Dimensions:

- Length:** 4 300mm
- Width:** 2 400mm
- Height:** 2 100mm

Example of the Rating Plate:

ACTOM			
LVD DISTRIBUTION TRANSFORMERS			
KVA	250	VOLTS HV/LV	25000 / 415
PHASE	3	AMPERES	225 / 278
IMPEDANCE	400	WINDINGS HV/LV	AL / AL
FREQUENCY	50 HZ	COOLING	ONAN
SERIAL NO.	L20021009	YEAR & MONTH OF MANUF.	2011/02
ORDER NO.	1115927	CORE & WINDINGS	450
CUSTOMER	ACTOM ELEC PRODUCTS	TOTAL MASS	146
SAP No.		CR	247

MANUFACTURED IN ACCORDANCE WITH
FACOM SPECIFICATION SA-346 87/0/0

OIL CONTAINS NO TRACE OF PCB'S

VENTILATE TANK INTERIOR
BEFORE REMOVING WINDING
COVER

TO REF FIG 1 F10 (INDICATE FIG 1) VACUUM
TERMINAL MARKINGS

L.V.

H.V. %	SWITCH POSITION
105	1
103	2
100	3
97	4
94	5

VECTOR SYMBOL
Dyn 11

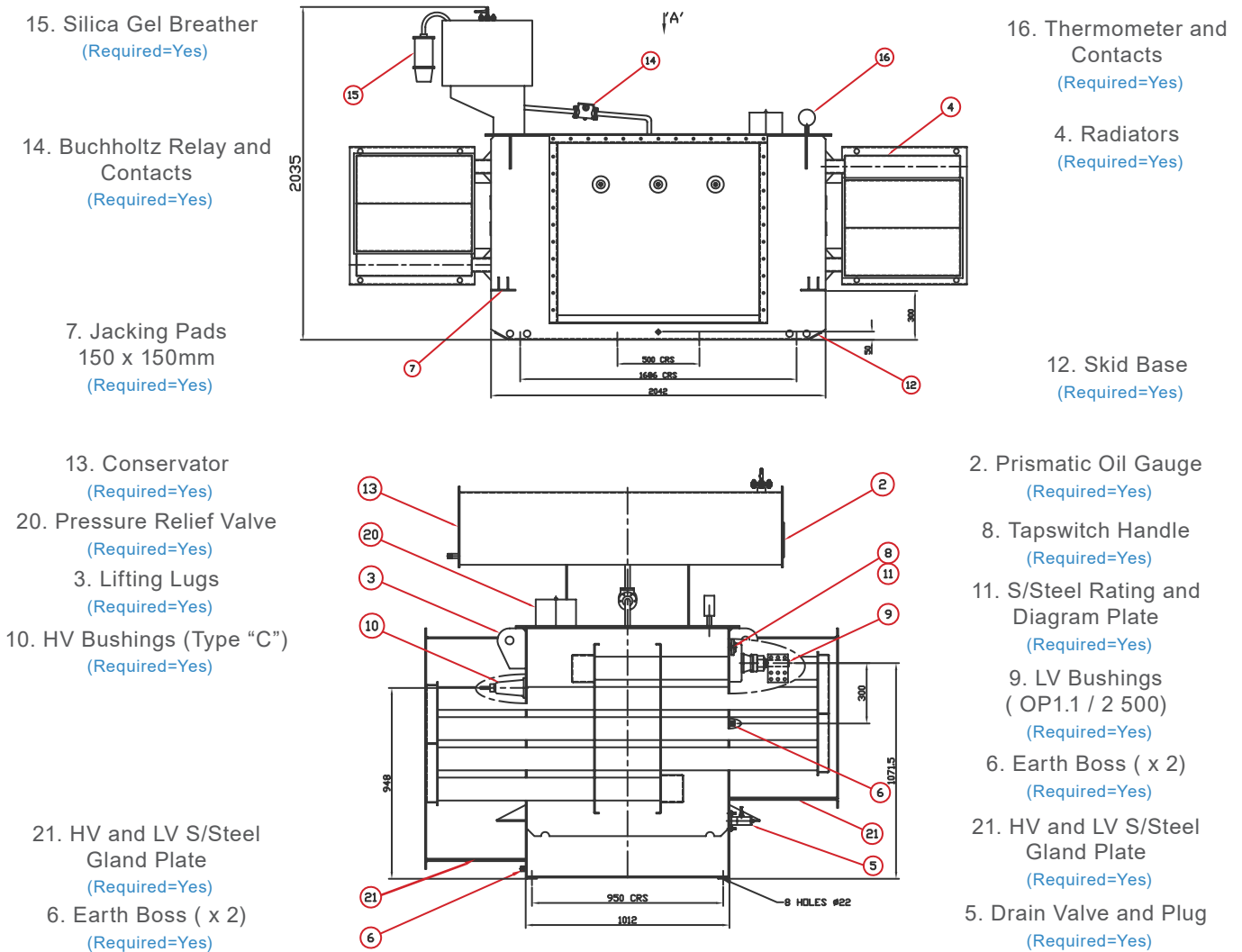
SANS 780 27033

- Product Data:**
- Rating** 3 150 - 5 000 KVA
- Voltage** 400 - 420 V
- Impedance** 4.5 %
- Number of Phases** Three

DISTRIBUTION TRANSFORMERS

33 000/400 Volt Three Phase

General Third Angle Projection (Scale 1:10)



Oil Litres 2 028 LT
Core & Wind Mass 4 079 KG
Total Mass 8 460 KG

Additional Information:

1. Rating Plate to be Positioned Below Tapswitch Handle
2. Tapping Range = $\pm 2.5\%$ and $\pm 5.0\%$
3. Impedance = 7.0%
4. Voltage Stated is Off-Load Voltage

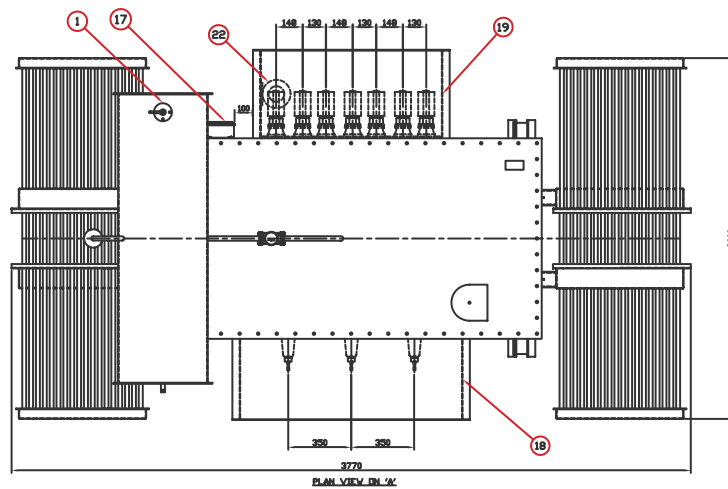
Address: 4 Branch Road, Germiston 1401, P.O. Box 678, Germiston 1400

DISTRIBUTION TRANSFORMERS

33 000/400 Volt Three Phase

General Third Angle Projection (Scale 1:10)

- 1. Filler / Filter Valve
(Required=Yes)
- 17. Auxillary Box
(Required=Yes)
- 22. Neutral Current Transformer
(Required=Yes)



- 19. LV Cable Box
(Required=Yes)

- 18. HV Cable Box
(Required=Yes)

Product Information:

Rated Power (kVA)	No Loss Watts	Full Load Loss Watts	Impedance (%)	Length (mm)	Width (mm)	Height (mm)	Oil Volume (Litres)	Total Mass (kg)
3 150	4 500	26 500	9	4 300	2 400	2 100	2 300	7 000
5 000	7 000	37 000	9	3 700	1 800	2 550	3 300	8 200

Complete your Project:

Please select the items you require and we will be in touch

Cables and Wires:

Indoor
Outdoor
General
Other
Let an ACTOM
Specialist Contact you

Lighting:

Indoor
Outdoor
General
Other
Let an ACTOM
Specialist Contact you

Transformers (Distribution):

Indoor
Outdoor
General
Other
Let an ACTOM
Specialist Contact you

Accessories:

Indoor
Outdoor
General
Other
Let an ACTOM
Specialist Contact you

Specific Information:

Address: 4 Branch Road, Germiston 1401, P.O. Box 678, Germiston 1400

For more Information on this Product Please Send us the Following

Product Information:

Product Name:

Quantity:

Project Name:

Date the Product is required:

Your Contact Information:

Name and Surname:

Company:

Email:

Phone Number:

Province:

Thank You

For having a Look at this Product

Please send this PDF back to us with all your Information

Scan the QR Code to visit our Website:

